

LINTEL SCHEDULE		
MARK	SIZE	JAMBS
L1	(2) 2x8	(1) KING (2) JACK STUDS
L2	(3) 2x8	(1) KING (2) JACK STUDS
L3	(3) 2x10	(1) KING (2) JACK STUDS
L4	(2) 1 3/4"x9 1/2" LVL	(1) KING (2) JACK STUDS
L5	(3) 1 3/4"x9 1/2" LVL	(1) KING (3) JACK STUDS
L6	(3) 1 3/4"x11 7/8" LVL	(1) KING (3) JACK STUDS
L7	(3) 1 3/4"x14" LVL	(1) KING, (3) JACK STUDS SIMPSON PORTAL AT SIM. - SEE S500 & S501
L8	(4) 1 3/4"x24" LVL (SEE 17/S600 FOR FASTENING DETAIL)	(1) KING (6) JACK STUDS
L9	(3) 2x12	(1) KING (3) JACK STUDS

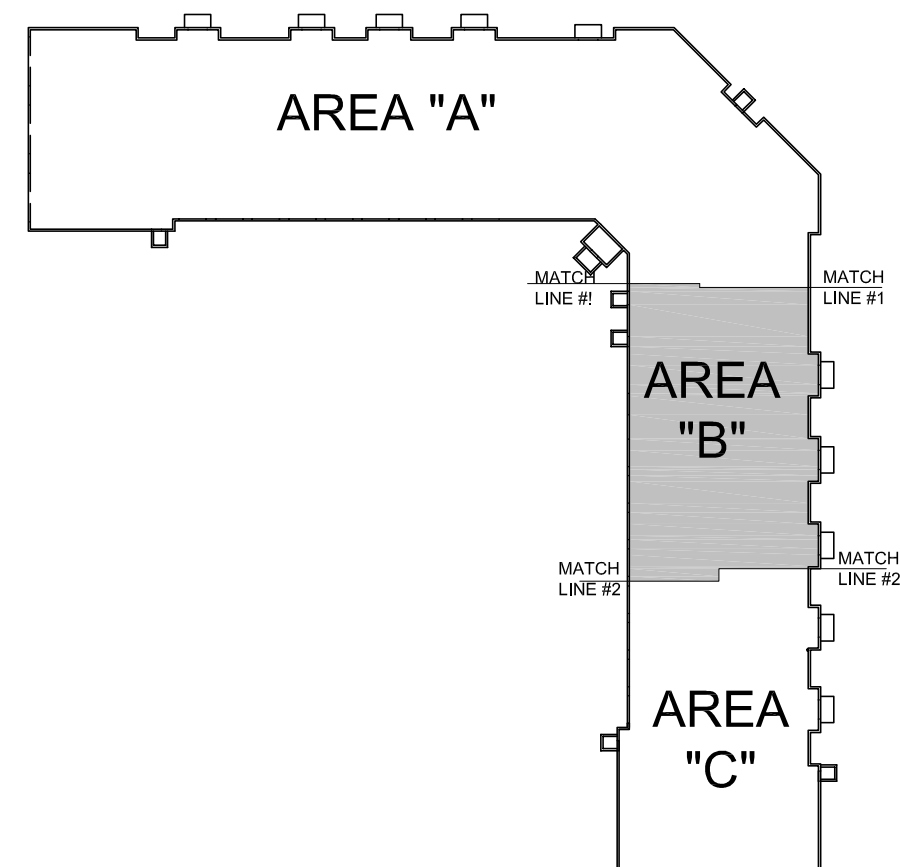
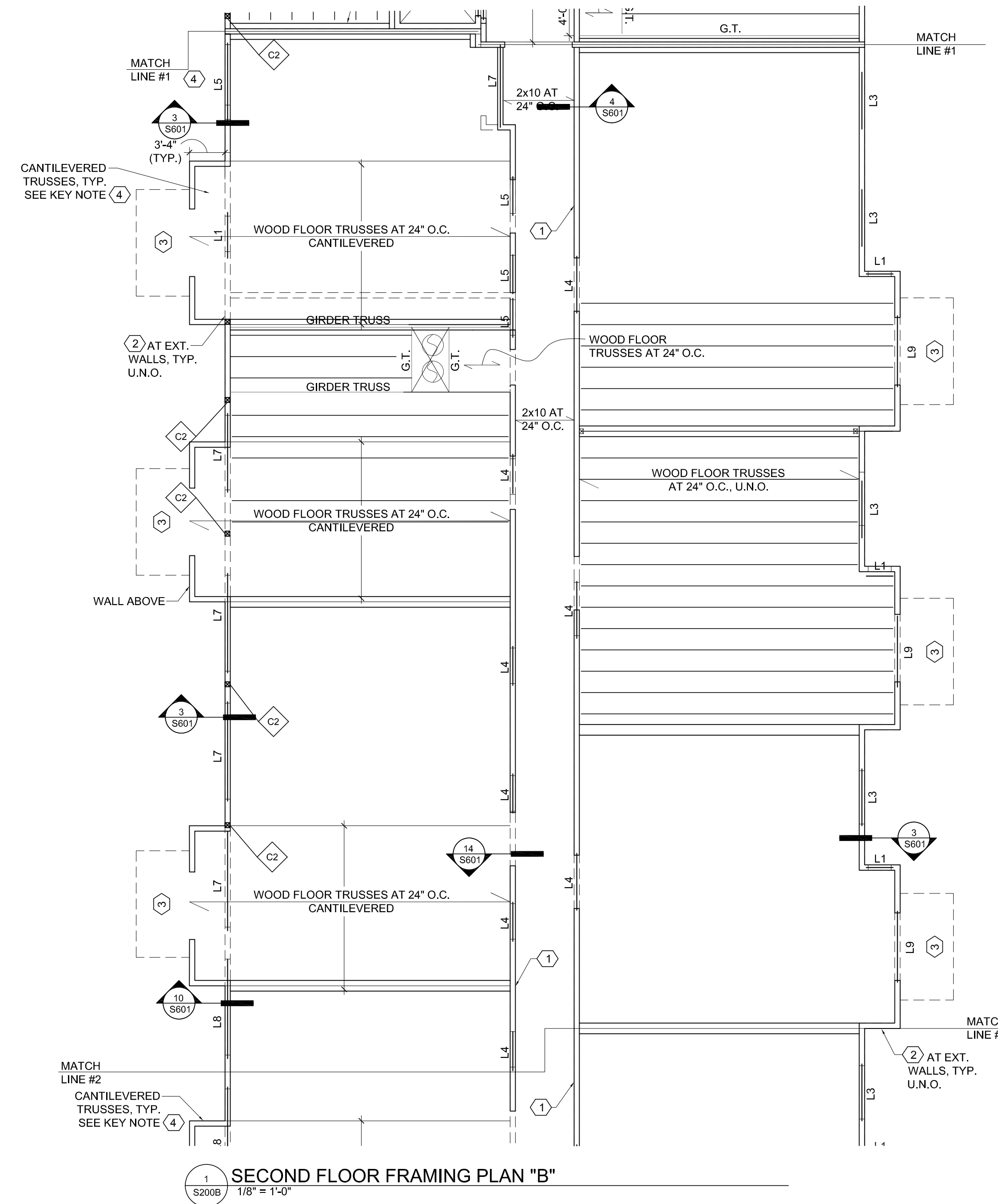
COLUMN SCHEDULE		
MARK	DESCRIPTION	BASEPLATE
C1	8x8 (NOMINAL) TREATED GLULAM POST	SIMPSON ABU88Z W/ (2) 5/8" Ø ANCHOR BOLTS
C2	(6) 2x6 SPF #2 OR BETTER (SEE NOTE #1)	SEE FDN. PLAN KEY NOTE # 2 FOR SILL PLATE REQUIRED
C3	(7) 2x6 SPF #2 OR BETTER (SEE NOTE #1)	SEE FDN. PLAN KEY NOTE # 2 FOR SILL PLATE REQUIRED
C4	(3) 2x6 SPF #2 OR BETTER (SEE NOTE #1)	SEE FOUNDATION PLAN NOTES FOR SILL PLATE REQUIRED.
C5	HSS4x4x1/4	PL. 3/4"x12"x1'-0" W/ (4) 3/4" Ø ANCHOR BOLTS @ FDN. PLAN
C6	(4) 2x6 SPF #2 OR BETTER (SEE NOTE #1)	SEE FOUNDATION PLAN NOTES FOR SILL PLATE REQUIRED.
C7	HSS 4x4x3/16	5/8"x10"x10" PLATE W/ (4) 3/4" DIA. ANCHOR BOLTS

COLUMN SCHEDULE NOTES:
1. NAIL STUDS TOGETHER W/ 16d NAILS @ 12" O.C.
STAGGERED, FULL HEIGHT.

SECOND FLOOR FRAMING PLAN NOTES:
1. SEE SHEET S000 FOR GENERAL STRUCTURAL NOTES.
2. ALL EXTERIOR WALLS SHALL BE SHEATHED W/ 7/16" APA-RATED SHEATHING.
3. FLOOR SHEATHING SHALL BE MINIMUM 3/4" PLYWOOD, 48/24 SPAN RATING.
4. TRUSS SUPPLIER SHALL COORDINATE TRUSS LOCATIONS W/ SHEAR WALLS. SEE SHEETS S600 & S601 FOR MORE INFORMATION.
5. FLOOR TRUSSES SHALL BE 24" DEEP, U.N.O. TRUSS SPACING LISTED ON PLANS ARE MAXIMUM SPACINGS. TRUSS SUPPLIER MAY DECREASE SPACING AS NECESSARY.
6. ROOF SHEATHING SHALL BE MINIMUM 1/2", 32/16" SPAN RATING. SEE DETAIL 1/S601 FOR FASTENING DETAIL.
7. ALL POSTS/JAMBS/COLUMNS CALLED OUT SHALL CONTINUE ALL THE WAY DOWN TO THE FOUNDATION WITH BLOCKING AS REQUIRED., REGARDLESS IF THE POSTS ARE CALLED OUT ON LEVEL BELOW.

SECOND FLOOR FRAMING PLAN KEY NOTES:

- ① 2x6 AT 16" O.C., SPF NO. 2 OR BETTER.
- ② 2X6 AT 12" O.C., SPF NO. 2 OR BETTER.
- ③ PRE-FAB BALCONY BY OTHERS, CONNECTION OF BALCONY TO BUILDING IS BY BALCONY SUPPLIER. COORDINATE REQ'D. RIBBONS W/ TRUSS SUPPLIER PRIOR TO FABRICATION.
- ④ DESIGN CANTILEVERED TRUSSES FOR PREFAB BALCONY LOADING & EXTERIOR WALL WEIGHT AT CANT. END. COORDINATE W/ BALCONY SUPPLIER.
- ⑤ 2x10 AT 16" O.C.
- ⑥ DESIGN TRUSSES FOR WALL LOAD OF 1.85 KLF (DL) + 2.25 KLF (LL) + 1.30 KLF (SL) - CONTRACTOR TO CONFIRM W/ TRUSS SUPPLIER IF THIS IS FEASIBLE.
- ⑦ 2x12 AT 12" O.C.
- ⑧ PROVIDE 1 3/4"x5 1/2" LVL STUDS AT 16" O.C. AT TALL WALL CONDITION.
- ⑨ DESIGN TRUSSES FOR WALL LOAD OF 0.75 KLF (DL) + 0.95 KLF (LL) + 0.70 KLF (SL).
- ⑩ DESIGN TRUSSES FOR POINT LOAD OF 1.9K (DL), 2.4 K (LL) AND 1.9K (SNOW).
- ⑪ DESIGN TRUSSES FOR WALL LOAD OF 0.55 KLF (DL) + 0.80 KLF (LL)
- ⑫ 2x4 AT 16" O.C.
- ⑬ PROVIDE (3) 2X6 IN WALL BENEATH LINTEL BRG. ABOVE.
- ⑭ FIREWALL HANGER REACTION: DL = 0.6K, LL = 1.2K
- ⑮ CONT. (2) 1 3/4"x9 1/2" LVL
- ⑯ CONT. (2) 1 3/4"x11 7/8" LVL
- ⑰ 16" DEEP TRUSSES



KEY PLAN

NO.	REVISION/ISSUE	DATE
2	MECHANICAL REVISIONS	10/07/25
1	REVISIONS	07/23/25
	PERMIT SET	03/06/25

JOB TITLE:
PARK & 3rd LOFTS

ALEXANDRIA, MN

Registration Information :
I hereby certify that this plan, specification or report was prepared by me or under my direct supervision and that I am a duly Licensed Engineer, under the laws of the State of Minnesota.
Signature: *[Signature]*
Name: JOSHUA HERZOG
Date: 07/23/25 Reg. No.: 42392

HERZOG ENGINEERING
1334 81ST AVE NE
SPRING LAKE PARK, MN 55432
(612) 844-1234
WWW.HERZOGENGINEERING.COM

SHEET CONTENTS:
SECOND FLOOR FRAMING
PLAN "B"

PROJECT #: 251010
DRWN. BY: CL
CHKD. BY: JH
SCALE: AS NOTED

SHEET #:
S200B