

LINTEL SCHEDULE		
MARK	SIZE	JAMBS
L1	(2) 2x8	(1) KING (2) JACK STUDS
L2	(3) 2x8	(1) KING (2) JACK STUDS
L3	(3) 2x10	(1) KING (2) JACK STUDS
L4	(2) 1 3/4"x9 1/2" LVL	(1) KING (2) JACK STUDS
L5	(3) 1 3/4"x9 1/2" LVL	(1) KING (3) JACK STUDS
L6	(3) 1 3/4"x11 7/8" LVL	(1) KING (3) JACK STUDS
L7	(3) 1 3/4"x14" LVL	(1) KING, (3) JACK STUDS SIMPSON PORTAL AT SIM. - SEE S500 & S501
L8	(4) 1 3/4"x24" LVL (SEE 17/S600 FOR FASTENING DETAIL)	(1) KING (6) JACK STUDS
L9	(3) 2x12	(1) KING (3) JACK STUDS

COLUMN SCHEDULE		
MARK	DESCRIPTION	BASEPLATE
C1	8x8 (NOMINAL) TREATED GLULAM POST	SIMPSON ABU88Z W/ (2) 5/8" Ø ANCHOR BOLTS
C2	(6) 2x6 SPF #2 OR BETTER (SEE NOTE #1)	SEE FDN. PLAN KEY NOTE # 2 FOR SILL PLATE REQUIRED
C3	(7) 2x6 SPF #2 OR BETTER (SEE NOTE #1)	SEE FDN. PLAN KEY NOTE # 2 FOR SILL PLATE REQUIRED
C4	(3) 2x6 SPF #2 OR BETTER (SEE NOTE #1)	SEE FOUNDATION PLAN NOTES FOR SILL PLATE REQUIRED.
C5	HSS4x4x1/4	PL. 3/4"x12"x1'-0" W/ (4) 3/4" Ø ANCHOR BOLTS @ FDN. PLAN
C6	(4) 2x6 SPF #2 OR BETTER (SEE NOTE #1)	SEE FOUNDATION PLAN NOTES FOR SILL PLATE REQUIRED.
C7	HSS 4x4x3/16	5/8"x10"x10" PLATE W/ (4) 3/4" DIA. ANCHOR BOLTS

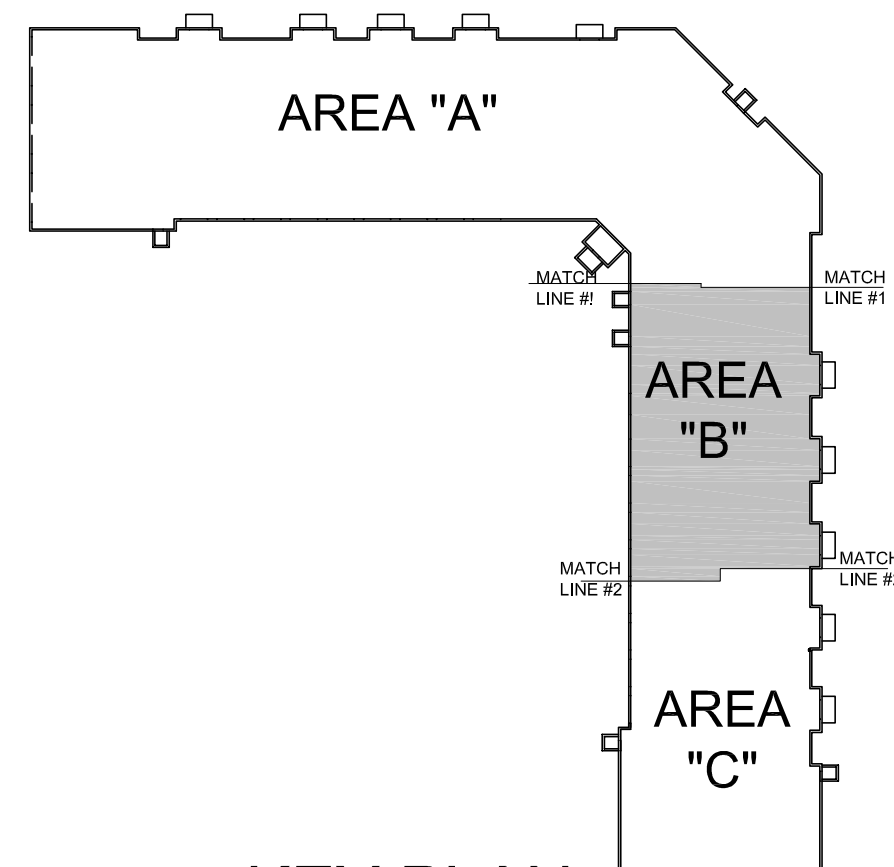
COLUMN SCHEDULE NOTES:
1. NAIL STUDS TOGETHER W/ 16d NAILS @ 12" O.C.
STAGGERED, FULL HEIGHT.

ROOF FRAMING PLAN NOTES:

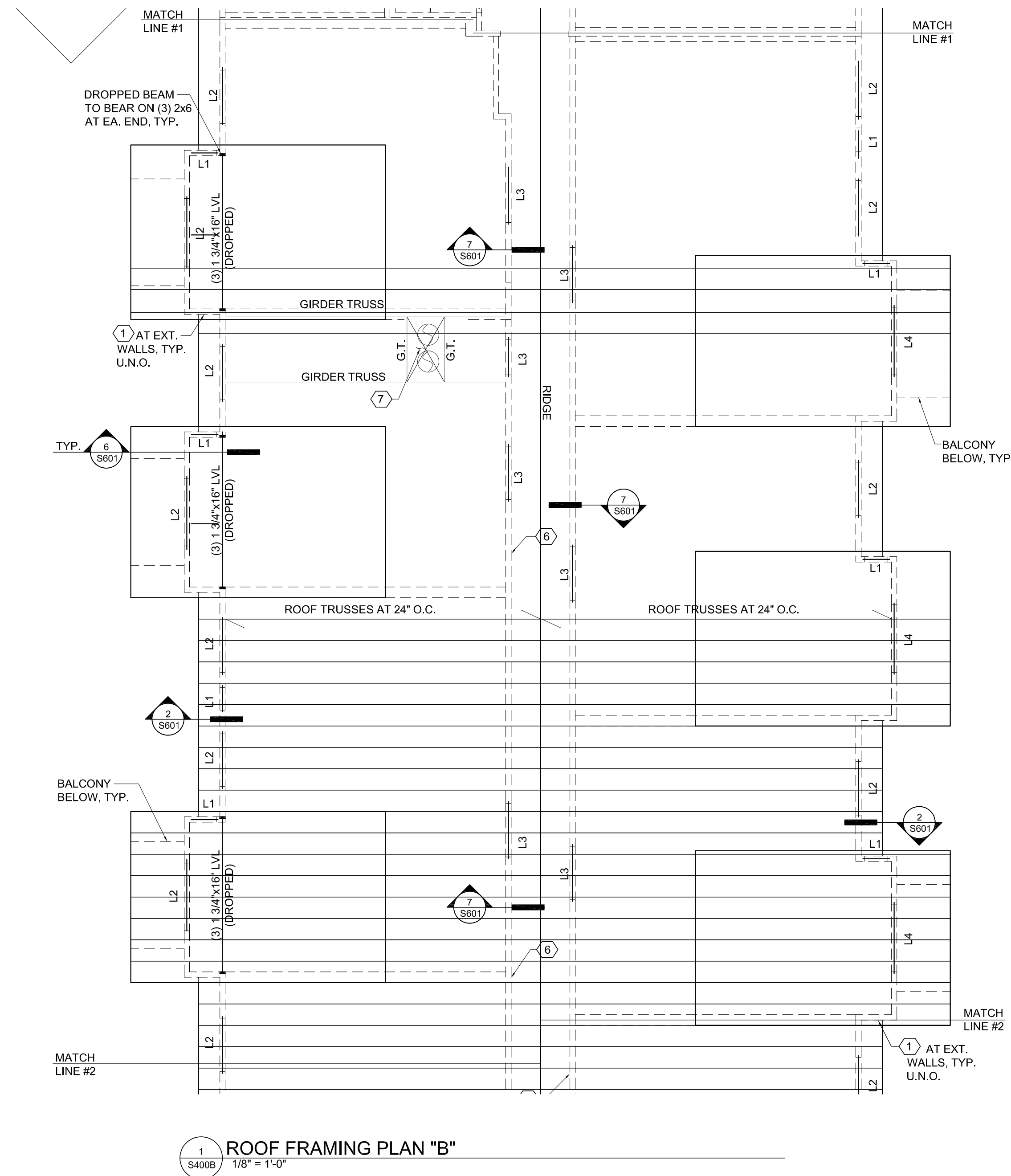
- SEE SHEET S000 FOR GENERAL STRUCTURAL NOTES.
- ALL EXTERIOR WALLS SHALL BE SHEATHED W/ 7/16" APA-RATED SHEATHING.
- ROOF SHEATHING SHALL BE MINIMUM 1/2", 32/16 SPAN RATING. SEE DETAIL 1/S601 FOR FASTENING DETAIL.
- TRUSS SUPPLIER SHALL COORDINATE ROOF TRUSS LOCATIONS W/ SHEAR WALLS. SEE SHEET S500 & S501 FOR MORE INFORMATION.
- ALL POSTS/JAMBS/COLUMNS CALLED OUT SHALL CONTINUE ALL THE WAY DOWN TO THE FOUNDATION WITH BLOCKING AS REQUIRED., REGARDLESS IF THE POSTS ARE CALLED OUT ON LEVEL BELOW.

ROOF FRAMING KEY NOTES:

- 2x6 @ 16" O.C., SPF NO. 2 OR BETTER
- 2x4 @ 12" O.C.
- 2x10 @ 24" O.C. LID FRAMING OVER STAIR SHAFT, SEE ARCH FOR MORE INFORMATION.
- 2x10 @ 24" O.C. LID FRAMING OVER SHAFT (BELOW ROOF TRUSSES).
- HOIST BEAM PER ELEVATOR SPECS.
- 2x6 @ 16" O.C.
- TRUSS SUPPLIER: FRAME OPENING AS REQ'D. FOR TRASH CHUTE PENETRATION, SEE ARCH.



KEY PLAN



1 S400B
1/8" = 1'-0"

NO.	REVISION/ISSUE	DATE
2	MECHANICAL REVISIONS	10/07/25
1	REVISIONS	07/23/25
	PERMIT SET	03/06/25

JOB TITLE:
PARK & 3rd LOFTS

ALEXANDRIA, MN

Registration Information :
I hereby certify that this plan,
specification or report was prepared
by me or under my direct
supervision and that I am a duly
Licensed Engineer, under the laws
of the State of Minnesota.

Signature: *[Signature]*
Name: JOSHUA HERZOG
Date: 07/23/25 Reg. No.: 42392

**HERZOG
ENGINEERING**

1334 81ST AVE NE
SPRING LAKE PARK, MN 55432
(612) 844-1234
WWW.HERZOGENGINEERING.COM

SHEET CONTENTS:
ROOF FRAMING PLAN "B"

PROJECT #: 251010
DRWN. BY: CL
CHKD. BY: JH
SCALE: AS NOTED

SHEET #:
S400B